

1 Unit NAT/BIO GENSET

1 x MWM TCG 2016 V8C
POWER: 350kW / 308 kWe (biogas)
www.louwsonenergy.com



LouwSon

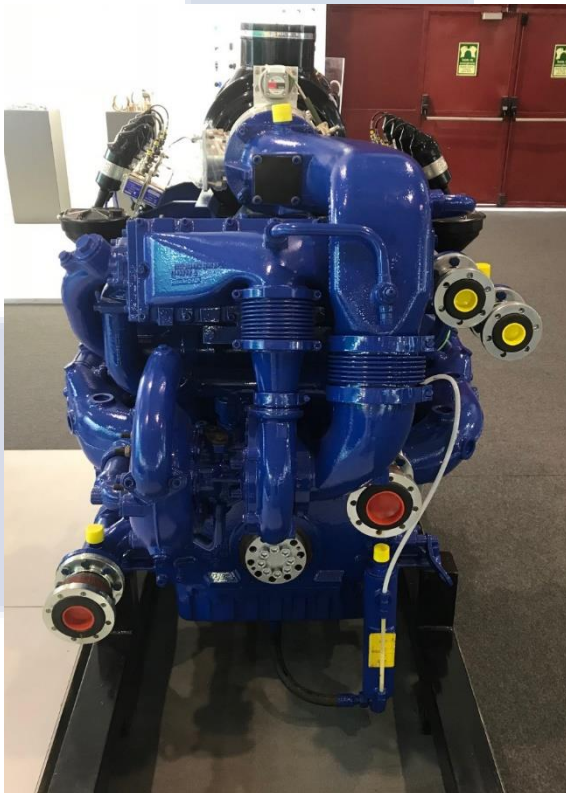
ENERGY

MAIN CHARACTERISTICS

Manufacturer: MWM

Model: TCG 2016 V8C. S/N: 2208198

- ⚡ Power: 350 kW
- ⚡ Year of manufacture: 1999
- ⚡ Fuel: BIOGAS
- ⚡ Ignition System: Motortech MIC4
- ⚡ Speed governor: Heinzmann
- ⚡ Fuel Mixer: Motortech Varifuel 2
- ⚡ Alternator: NONE



KEY FEATURES

- ⚡ Engine only
- ⚡ Fully refurbished
- ⚡ New crankshaft, Pistons, liners, intercooler
- ⚡ Refurbished cylinder heads
- ⚡ Refurbished turbo charger
- ⚡ Upgraded with new ignition system and fuel mixer
- ⚡ Available immediately



LouwSon Energy Ltd

Todwick Road Industrial Estate Unit 8, Bookers Way, Dinnington, Sheffield S25 3SH

☎ Office +44 1709 718 000 📞 James +44 7487 674 172 📞 Roland +31 6 2740 2766

✉ Sales@louwsonenergy.com 🌐 www.louwsonenergy.com Registered in UK no. 10646392 VAT no. 296332774